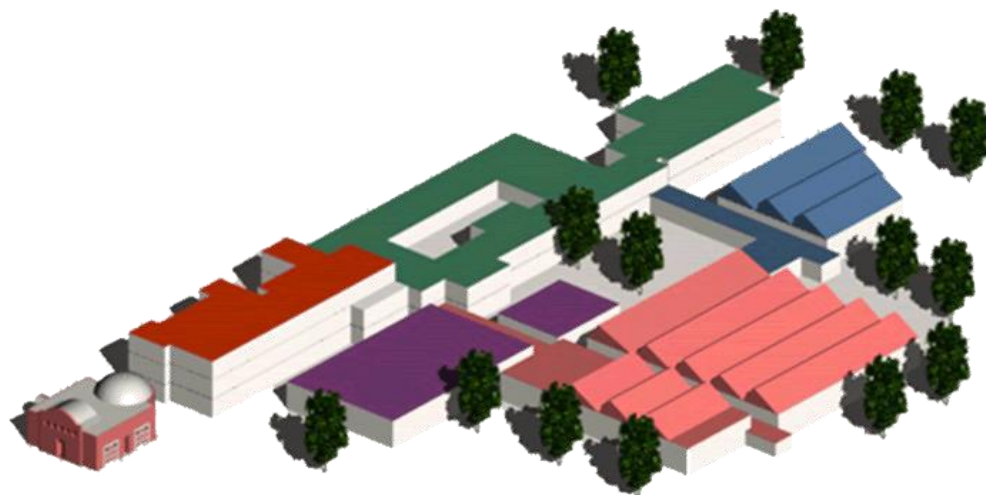


ISTITUTO TECNICO TECNOLOGICO STATALE

Alessandro Volta

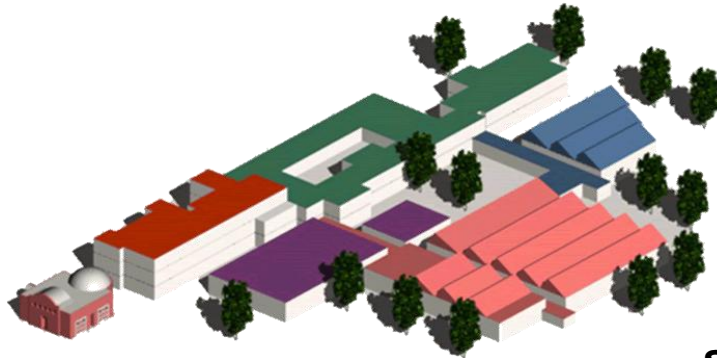
PERUGIA

v o l t @ - S m a r t s c h o o l



Prof. Rita Coccia: headteacher I.T.T.S. “A. Volta” Perugia

V o l t @ - S m a r t s c h o o l



Branches of study

Mechanics, Mechatronics and Energy

Electronics and Electrical Engineering

**Information and Communication
Technology**

**Chemistry, Materials and
Biotechnology**

Transport and logistics

Graphics and Communication

structure

surface: 14.000 mq

classes : n.55

laboratories n. 26

gym

bar / canteen

library

planetary

music room

school staff

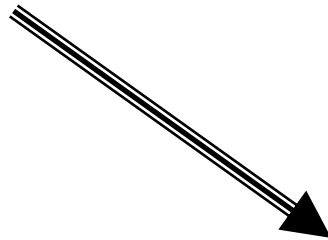
students : n.1200

teachers : n.110

administrative : n.38



A **smart city** is a city in which the movements are easy; technological
A smart city promotes sustainable development;
A smart city promotes its tourist image;
A smart city offers a creative environment and promotes innovation;
A smart city has a strategic vision of their future.



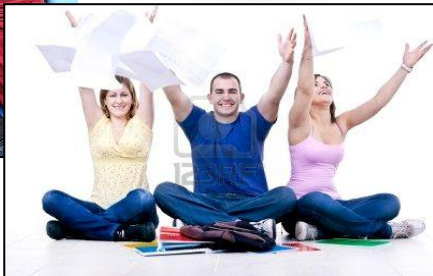
Volt@ **smart** is a school in which you favor:
knowledge, skills, abilities

Volt@ **smart** promotes sustainable development;

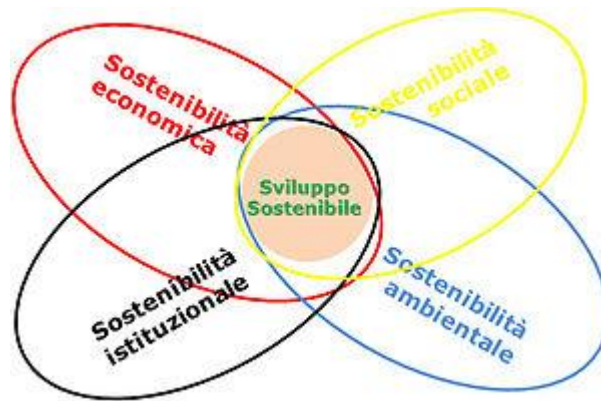
Volt@ **smart** promotes its mission

Volt@ **smart** offers a smart creative environment
fosters innovation;

Volt@ **smart** has a strategic vision of their future.



THE FOUR COMPONENTS OF SUSTAINABILITY



Economic sustainability: meaning the ability to generate income and employment for the people's livelihood.

Social sustainability: meaning the ability to guarantee conditions of human well-being (safety, health, education) equally distributed to classes and gender.

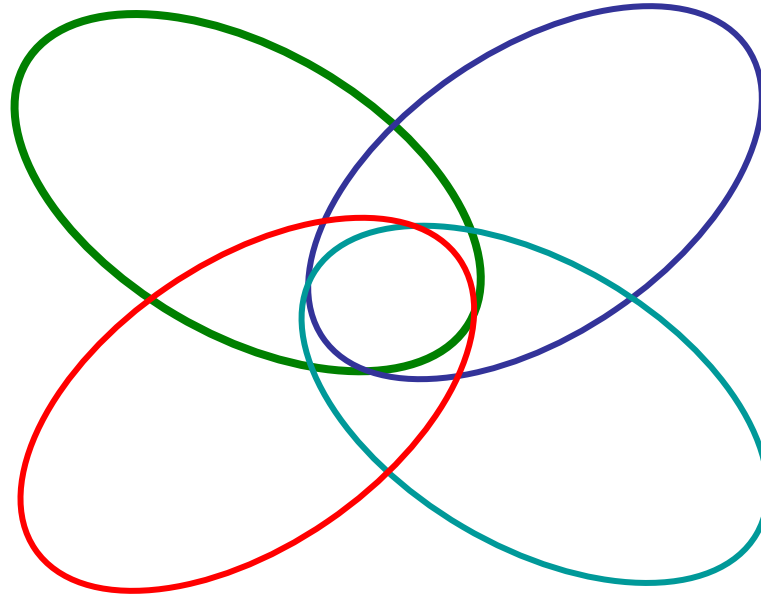
Environmental sustainability: meaning the ability to maintain quality and reproducibility of natural resources.

Institutional sustainability: meaning the ability to ensure conditions of stability, democracy, participation, justice.

THE FOUR COMPONENTS OF SUSTAINABILITY IN VOLT@SMARTSCHOOL

Social Sustainability:

defined as the ability to achieve a level of well-being at school through: the diversification of the curriculum, the inclusion (construction Pei, PDP), respect the rhythms and styles of learning, teaching innovation



Economic

sustainability: the capacity to generate knowledge, skills and competence for use in the workplace by creating employability workplace wellness

Institutional sustainability:

meaning the ability to ensure conditions of democracy, participation, and justice for all members of the school: students, staff, families

Environmental

sustainability: meaning the ability to ensure safe environments, pleasing, appropriate to the teaching actions, conducive to learning self-sufficient.

Volt@ - Smart school

Features of the smart school



school a comfortable, attractive, safe, with adequate space that help to implement projects and activities, to move ahead faster, saving time

Features of the smart school

2

a school Technological interconnected

100 Mb/sec.

Features of the smart school

a school technological interconnected with
n.87 whiteboard in all classrooms and laboratories

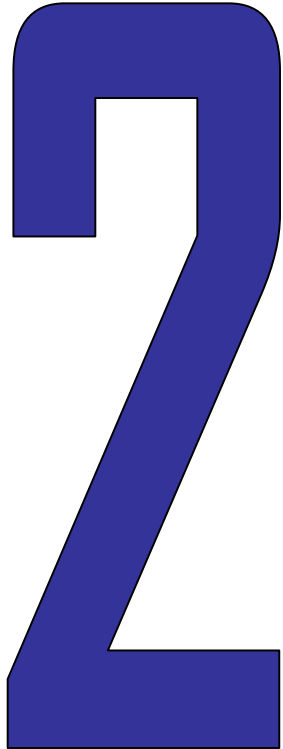
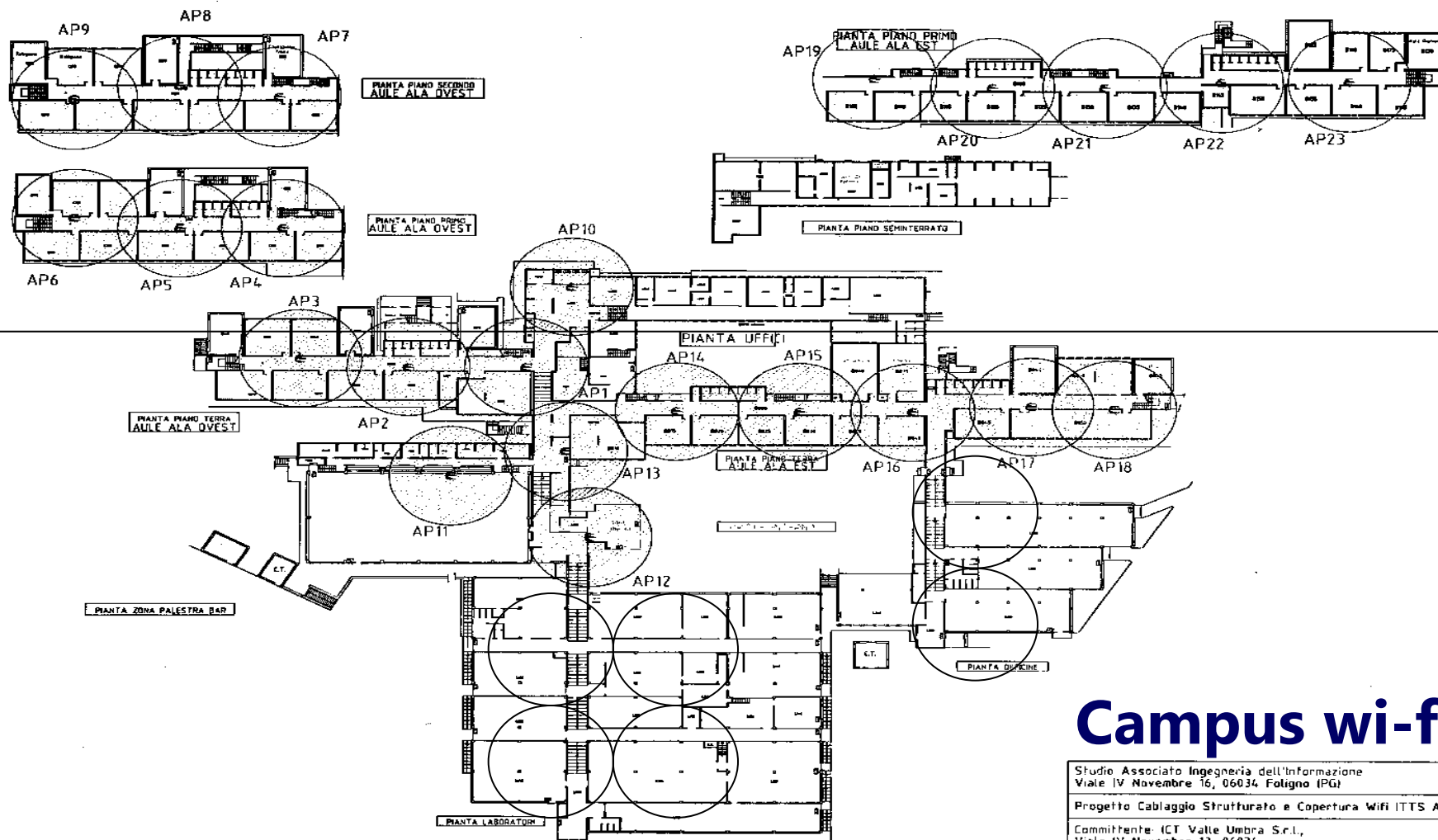


TAVOLA 6: Disposizione AP 2.4GHz - Scala 1:1000



Campus wi-fi

Studio Associato Ingegneria dell'Informazione
Viale IV Novembre 16, 06034 Foligno (PG)

Progetto Cablaggio Strutturato e Copertura Wifi ITTS A.Votta

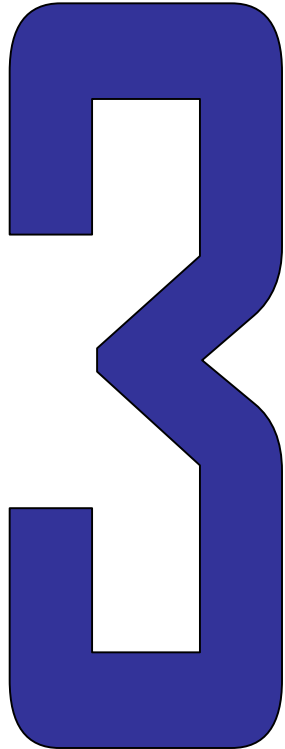
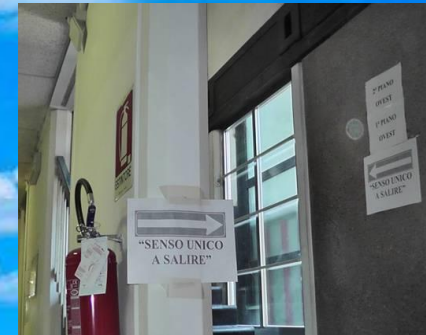
Committente: ICT Valle Umbra S.r.l.,
Viale IV Novembre 12, 06034,
Foligno (PG)

V o l t @ - S m a r t s c h o o l

Features of the smart school

a school capable of promoting educational innovation

the class moves to the sound of the bell every hour
while the teacher remains in the classroom assigned!!!!



CLASSROOMS FOR DISCIPLINARY DEPARTMENT

Teaching activities with L.I.M.

Documentation and Research

Cooperative learning

Educational resources for projects



Teaching management with 

The Department for Classrooms (Italian-History-Law ...) environments equipped with setting appropriate technology to a teaching laboratory where the teacher designing experiments compares experiences (cooperative learning among teachers)

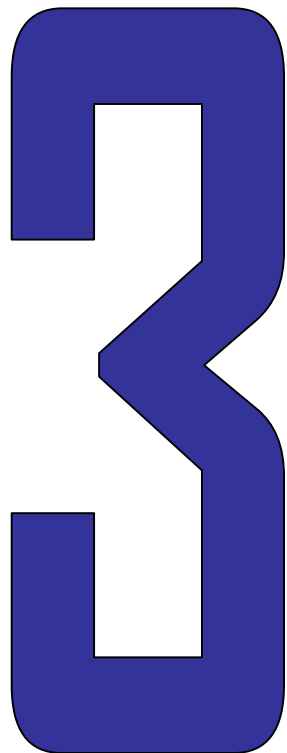
THE STUDENT AT HOME CAN.....

Video lessons, Simulations Learning exercises



Courses recovery and consolidation
for commuter students

Teaching materials



Features of the smart school

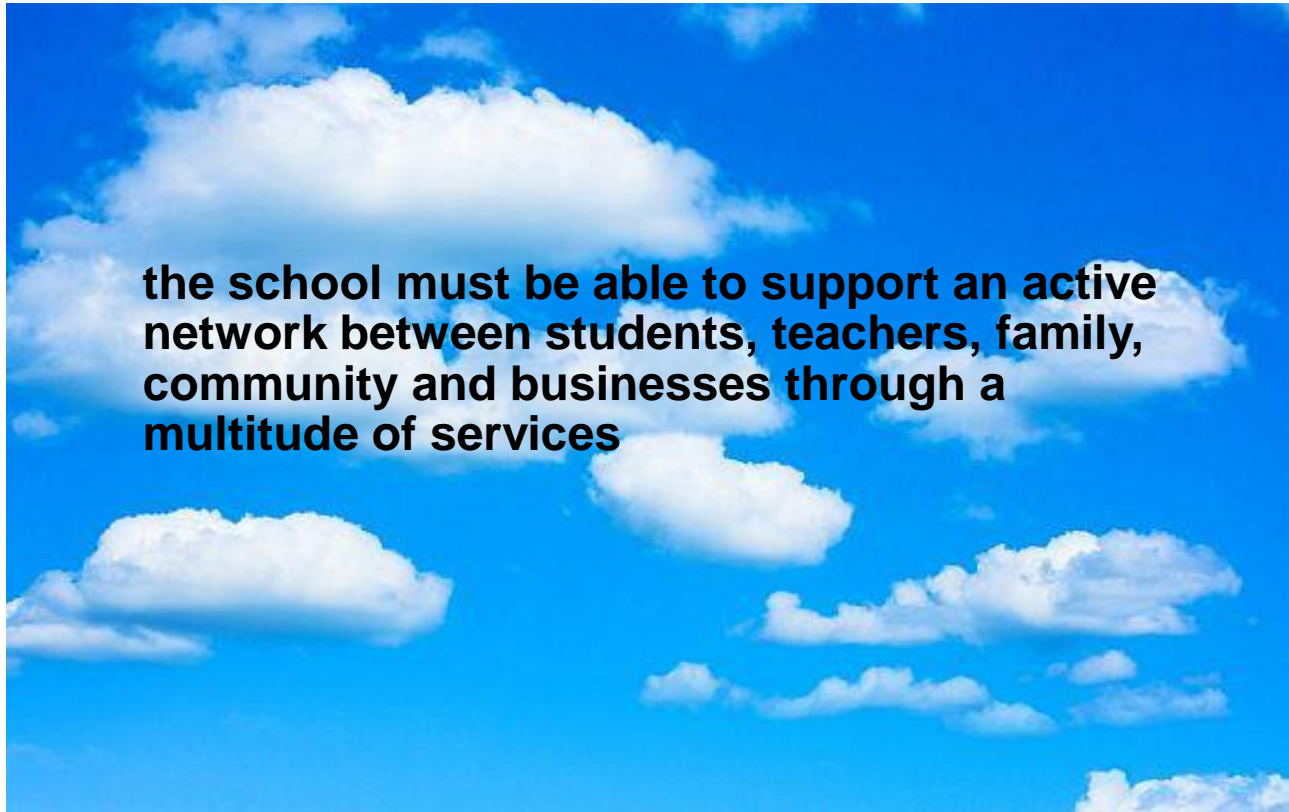
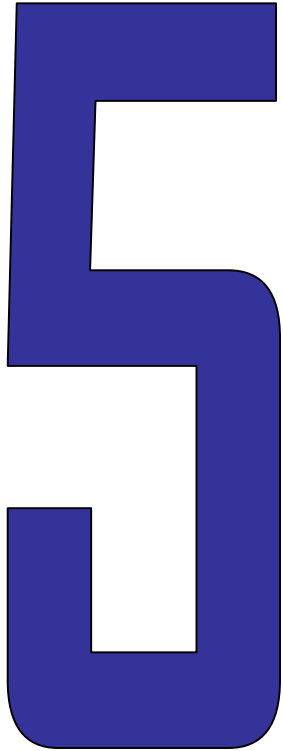
4



the school should be aware that you need to create an intellectual environment and social:
challenging respectful of diversity creative sustainable

Features of the smart school

the school must be able to support an active network between students, teachers, family, community and businesses through a multitude of services



v o l t @ - S m a r t s c h o o l

Features of the smart school

SERVICES FOR STUDENTS ON LINE

Badge of service to every student to

**Opening of the school
Map laboratory classes
Event Logging in advance
Control absences
Delays early exits**



SERVICES FOR THE FAMILY on line

Management talks with teachers

Assessment of the student in real time

Information on the activities in the classroom

absence and delays

events at school

Certificates



SERVICES FOR TEACHERS ON LINE

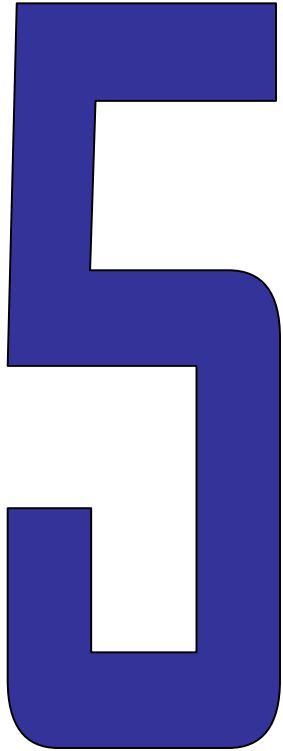
Gradebooks electronic

Management interviews with parents

Event Logging in advance

Control absences

Evaluation of the student



V o l t @ - S m a r t s c h o o l

Features of the smart school

6

A photograph of a bright blue sky filled with fluffy white clouds. The text 'INTEGRATED IN THE TERRITORY' is centered over the image.

INTEGRATED IN THE TERRITORY

V o l t @ - S m a r t s c h o o l

Features of the smart school

7

A photograph of a bright blue sky filled with fluffy white clouds. The text 'INTEGRATED WITH EUROPE' is centered over the image.

INTEGRATED WITH EUROPE

Our European partners

7



Repubblica ceca



Islanda



Finlandia



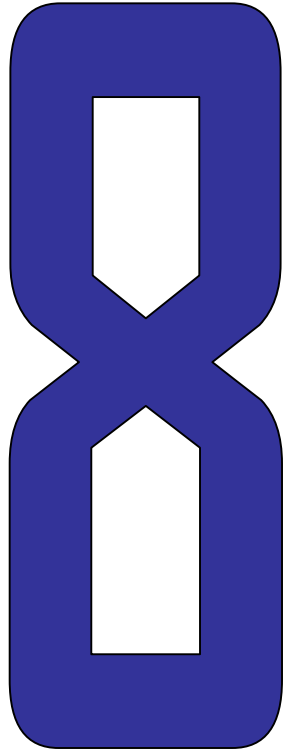
Olanda



Danimarca



Features of the smart school



**a school which reports its activities to
the territory**

Volt@ - Smart school

Volt@-Smart School
Scuol@2.0

we changed

Setting learning

technology

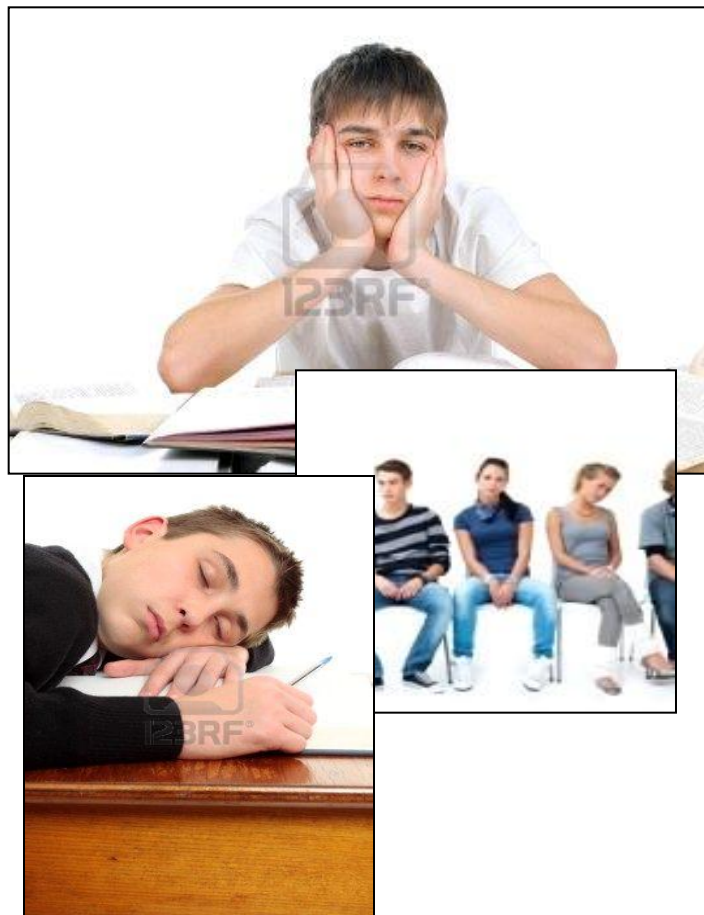
methodology

training

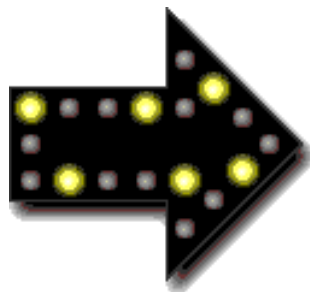
**educational
organization**

**organization
administrative**

scuola



Scuol@2.0



Volt@smartschool

a.s.	2006-07	200-08	2008-09	2009-10	2010-11	2011-12	2012-13
n. students of the first classes	160	165	170	180	220	250	371

2013-14

403